



MAXI WINDOW INSTALLATION INSTRUCTIONS

On the back of this page you will find a diagram of a MAXI Window Awning. It will be necessary to refer to this diagram while reading these instructions so that you can properly install your MAXI Window Awning.

LOCATING THE BRACKETS

If you ordered your MAXI Awning wider than the window casing, the awning must be installed above the casing to avoid the roller tube from hitting the casing. If the awning has been ordered the same width as the outside dimension of the casing, you have the option to install on the casing or the wall above the casing. After determining your bracket height refer to the diagram on the back of this page. Locate the MAXI end bracket (#1). Note the direction in which the MAXI bracket is installed. The mounting distance from each MAXI end bracket is always the same as the width ordered. This dimension is taken from the outside edge of the brackets.

INSTALLING THE BRACKETS

The bracket must be secured to studs, headers or joist with 3/8" diameter lags and a length that will penetrate the framing 2 1/2" to 3". Drill a 1/4" diameter hole 2 1/2" deep into the framing, square and center into the studs or joists at each point a lag is being installed. It may be necessary to drill a 3/8" diameter hole, at each 1/4" hole, the depth of the wood siding or casing to prevent the siding from splitting. Then remove the gear or motor from the MAXI bracket and install the brackets at your predetermined location.

If the width of the awning does not allow you to install the brackets on studs or joists, a high quality toggle bolt may be used. This style of fastening requires that you have solid sheathing behind the siding in order to support the MAXI brackets.

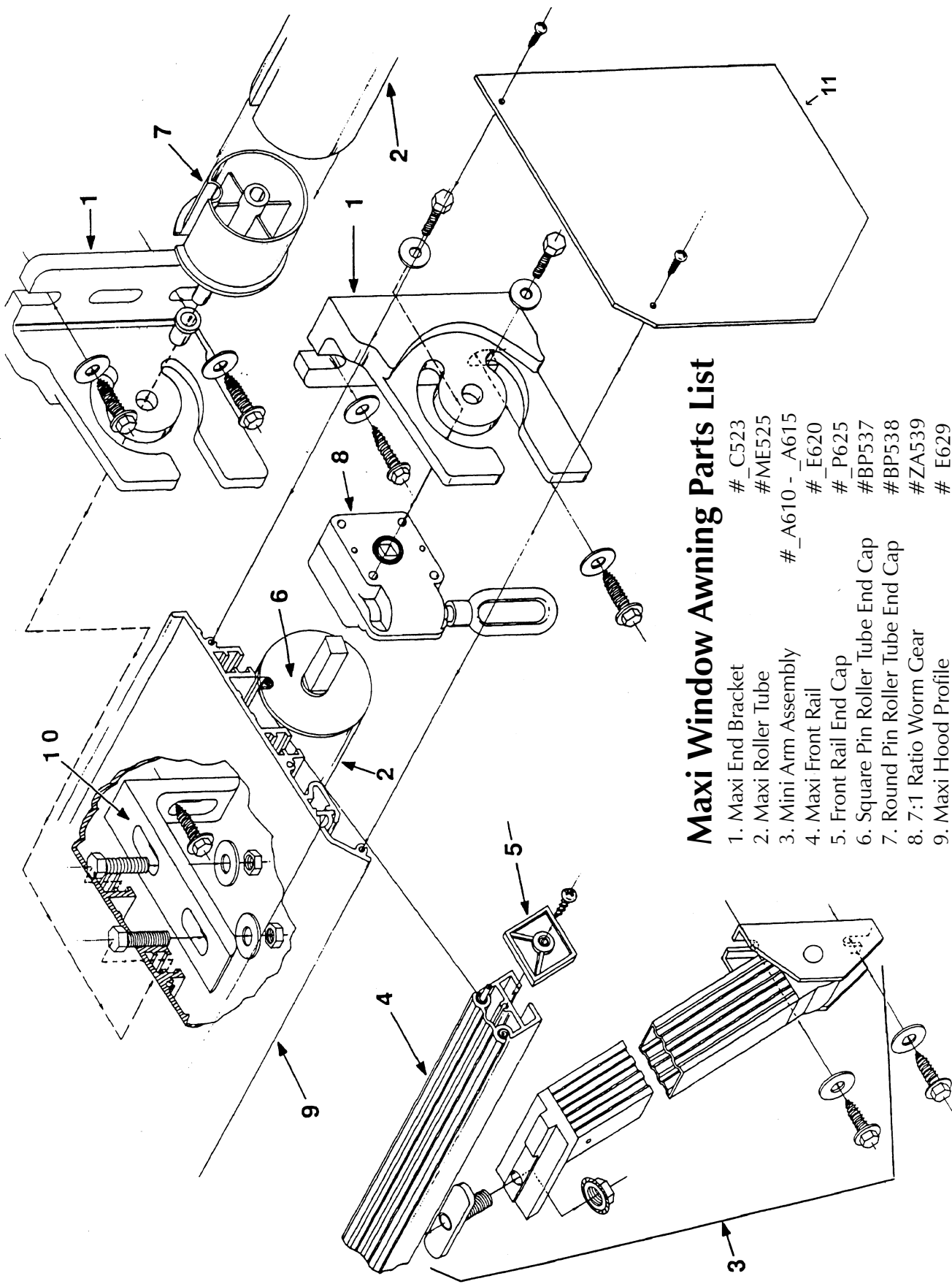
INSTALLING THE HOOD

If an optional hood has been included with your MAXI Window Awning, it must be installed before installing the roller tube. To locate the hood brackets, snap a chalk line 3/4" above the already installed maxi brackets (#1). When 2 hood brackets are supplied, position the top of each bracket even with the chalk line snapped, and in from the ends approximately 25% of the length of the hood. When 3 or more hood brackets are supplied,

position each end bracket 2' to 3' in from the ends of the hood. Space any additional brackets evenly between the two end brackets. Secure all hood brackets to studs or headers. Use 3/8" diameter lags and a length that will penetrate the framing 2 1/2" to 3" deep. Insert two 5/16" x 1" bolts into the hood (as shown on the diagram) for each hood bracket. Assemble the hood end covers to the hood. Place the hood (#9) onto the hood brackets (#10). Adjust the hood side to side so there is 1/2" between the hood end covers (#11) and the MAXI bracket (#1). Carefully tighten the hood to the brackets with the nuts and washers supplied.

INSTALLING THE AWNING

With the fabric installed on the roller tube and front rail, insert the round pin roller tube end cap (#7) which is attached to the roller tube into the mounting bracket (#1) as shown. Make certain that the front rail is in front of the roller tube. Next, slide the square peg on the roller tube end cap (#6) into the 7:1 worm gear (#8). Attach the gear by passing the two bolts through the mounting bracket (#1) and thread them into the gear (#8). Pivot the gear so that the hand crank eye is slightly angled away from the wall then tighten the bolts securely. The MAXI arms (#3) are designed to be fastened anywhere along the front rail (#4). When only two arms are supplied they are to be mounted in from each end no more than 25% of the length of the front rail. Any additional arms must be spaced evenly between the two end arms. To determine the proper mounting height of the arms, take the projection of the awning ordered and subtract 2 1/4". This dimension is the arm mounting height measuring from the bottom of the mounting bracket (#1) to the location of the bottom of the arm wall bracket. With the arm in its relaxed position, pointing toward the ground, and the front rail arm end facing in to the center of the awning, position the arm wall bracket above the mark on the wall and mark the location of the lag bolts. Install a 5/16" diameter lag by the proper length into the location of the lower hole. Tighten the lag just enough to allow the slot of the arm bracket to slip snugly behind the lag. Install the second lag into the upper hole of the arm wall bracket. Repeat this procedure for all arms. Remove the front rail end cap (#5) and insert one track bolt per arm into the slot of the front rail (#4). Reinstall the front rail end cap. Swing each arm up to the front rail and fasten the arm to the track bolt with the nuts supplied. Level all arms then tighten the nuts securely.



Maxi Window Awning Parts List

- | | |
|-----------------------------------|----------------|
| 1. Maxi End Bracket | #_C523 |
| 2. Maxi Roller Tube | #ME525 |
| 3. Mini Arm Assembly | #_A610 - _A615 |
| 4. Maxi Front Rail | #_E620 |
| 5. Front Rail End Cap | #_P625 |
| 6. Square Pin Roller Tube End Cap | #BP537 |
| 7. Round Pin Roller Tube End Cap | #BP538 |
| 8. 7:1 Ratio Worm Gear | #ZA539 |
| 9. Maxi Hood Profile | #_E629 |
| 10. Maxi Hood Bracket | #_E631 |
| 11. Hood End Cover | #_E630 |

Replace the space preceding the part # with a W for White, a B for Bronze, or an S for Silver.